

Concept A Outline

This design concepts for the Idaho Springs skatepark was generated from community feedback on terrain style, scale, and diversity. Concept A features extended street lanes through a low plaza area with opportunities for long, technical lines. This area contains a signature center island. In the northeast corner of the park an elevated deck contains a backyard pool-style bowl with ample dedicated staging and spectating areas.

← - - - → Pedestrian Circulation

↔ Rider Circulation

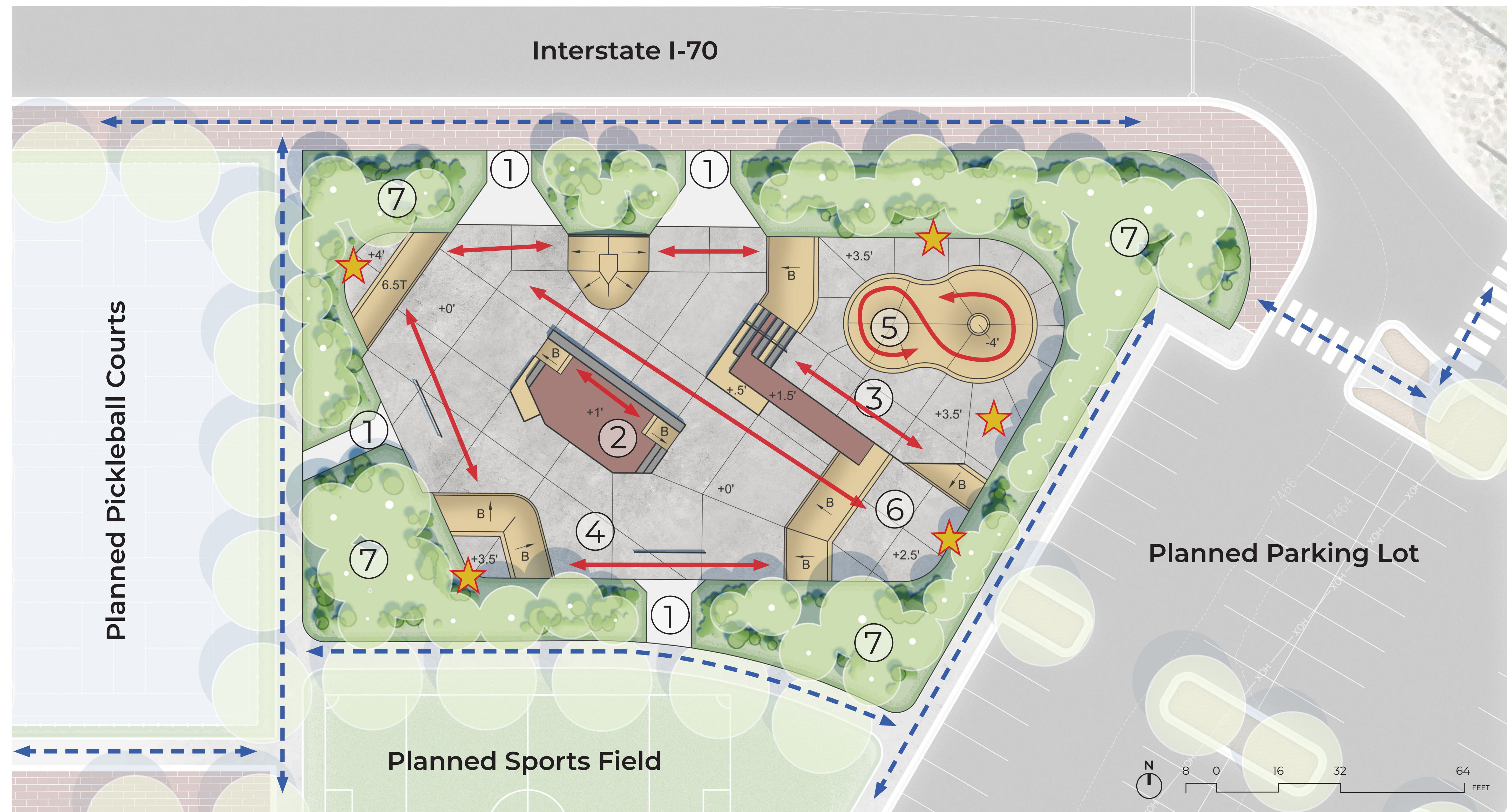
★ Staging Area

Concept Plan Legend

- ① Skate park Entry Point
- ② Street Plaza Tech Island, Banks, Steps, and Ledge
- ③ Street Course Upper Level w/ Banks, 7-Stair, and Handrail
- ④ Flow-Zone w/ Banked Hips, Flat Bars, Quarter Pipe, and Pyramid
- ⑤ Skate park - Peanut Backyard Bowl
- ⑥ Staging Area
- ⑦ Green/Buffer Space (Not in Skatepark Scope)

Skate park features are schematic and will be modified based on community input, project budget and geo-technical findings. The current design is schematic to represent the intended terrain style within the project scope.

Concept A Plan (Preliminary)






Example Terrain Photos



Concept B Outline

This design concepts for the Idaho Springs skatepark was generated from community feedback on terrain style, scale, and diversity. Concept B features shorter, high-speed lanes with plenty of opportunities for flow through and across the lower sections of the park. In the northeast corner of the park matches the one proposed in concept A with the same backyard pool-style bowl surrounding by spacious staging and spectating zones.

-  Pedestrian Circulation
-  Rider Circulation
-  Staging Area

Concept Plan Legend

- ① Skate park Entry Point
- ② Street Plaza Tech Island, Banks and Manual Pad
- ③ Street Mid-Level w/ Banks, 5-Stair, Handrail, And Ledge
- ④ Flow-Zone w/ Banked Hip, Flat Bars, and Quarter Pipes
- ⑤ Skate park - Peanut Backyard Bowl
- ⑥ Staging Area
- ⑦ Green/Buffer Space

Skate park features are schematic and will be modified based on community input, project budget and geo-technical findings. The current design is schematic to represent the intended terrain style within the project scope.

Concept Plan B (Preliminary)

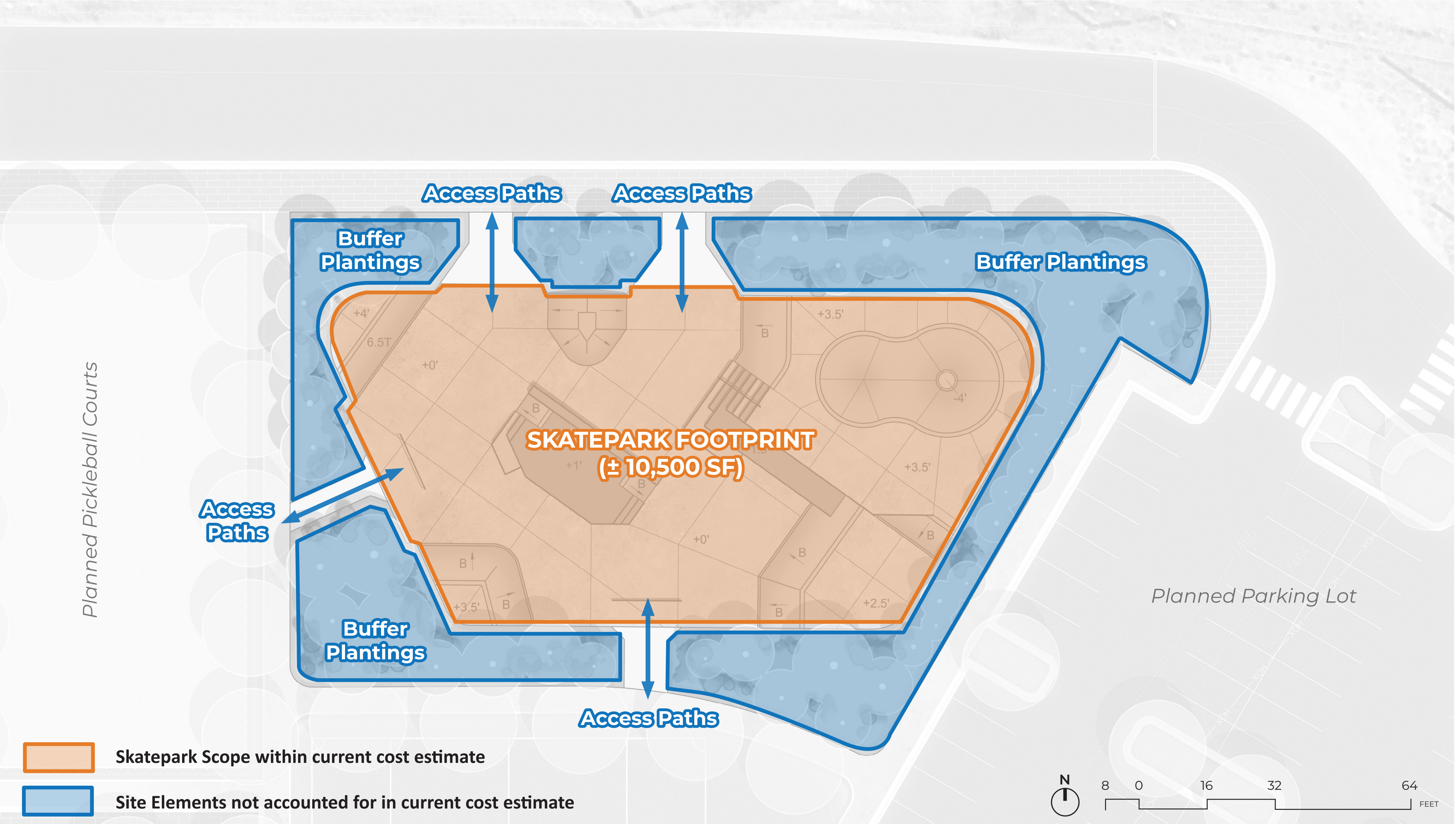


Example Terrain Photos



Preferred Concept Design (Preliminary)

Rough Order of Magnitude Cost Exhibit



KEY ASSUMPTIONS

This estimated cost of construction is based off of the following project assumptions:

- Cost categories listed in estimate are based on typical percentages on past projects. Actual cost figures will be provided as the project progresses and design concepts are developed.
- Target size of skate park is roughly 10,500 square feet, as budget allows.
- Target skate park size and budget presented on this exhibit assume that a successful fundraising period occurs prior to construction beginning. The final concept design for the project may adjust accordingly if this does not occur.
- Site amenities listed are currently not in the project scope. Any amenities to be included will be coordinated with THK and the larger park master planning efforts. Site amenities will be excluded from the budget as needed to maximize skate park complexity/size.
- Additional landscaping/planting, outside of required site restoration, is excluded from the project budget at this time.
- Base data (survey & geo-tech report) is under review and may impact the final size, location and nature of the skate park facility.
- The owner is responsible for all material and soil testing within the larger park area.
- Pricing assumes that subsurface drainage is achievable and will be connected to the existing drainage channel to the northeast.

PRELIMINARY COST ESTIMATE:

ITEM	ESTIMATED COST
Project Design & Engineering	\$94,000
SKATE PARK CONSTRUCTION SUBTOTAL	
General Conditions	\$250,000
Earthworks & Grading	\$165,000
Drainage	\$60,000
Skate park Specialty Concrete Work	\$561,000
Site Restoration (Seed or Sod)	\$17,000
SKATE PARK CONSTRUCTION GRAND TOTAL	
Construction Contingency* (10%)	\$117,000
PROJECT GRAND TOTAL	
	\$1,264,000

ADDITIONAL ITEMS & SITE AMENITIES**	
(Potential items & amenities not covered in skate park cost above)	
Pedestrian Entry Plaza(s) & Connection Pathways	TBD
Skate park Lighting	TBD
Shade Structures	TBD
Spectator Plaza/Seating	TBD
Signage	TBD
Trash/Recycling/Bike Rack	TBD
Planting(s) & Landscape Improvements (beyond basic turf restoration)	TBD

NOTES:

- * Construction contingency is being held for the project at this stage to account for unforeseen expenses of scope additions. This percentage will be reduced as the project develops and uncertainties around site constraints, earthwork requirements, and other potential costs are accounted for.
- ** Site amenities listed are preliminary, contingent on available budget, and require verification by client

COST BREAKDOWN CHART

